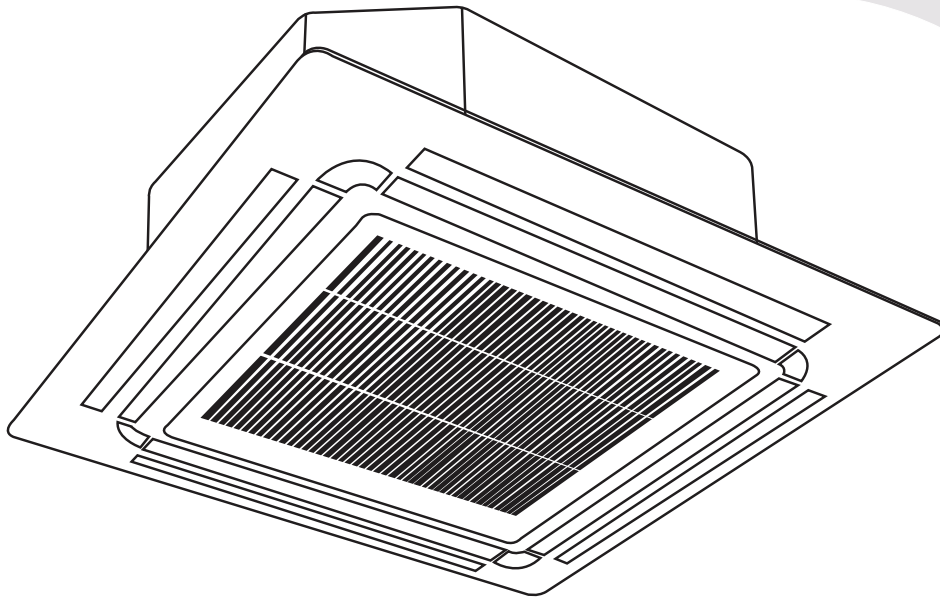


PIONEER®

CYT-24 Inverter Series

For 9,000-24,000 BTU/hr Systems

Quantum Ultra (R-454B)



Parts Diagram

Note

Intended for use with Single-Zone Split Systems. If the indoor sections will be installed as part of a Multi-Zone System, refer to the supplemental instructions provided with the Multi-Zone Outdoor Unit for complete and accurate guidance. Certain specifications—such as minimum floor area requirements—may differ, and are outlined in more detail within the Multi-Zone Section documentation.

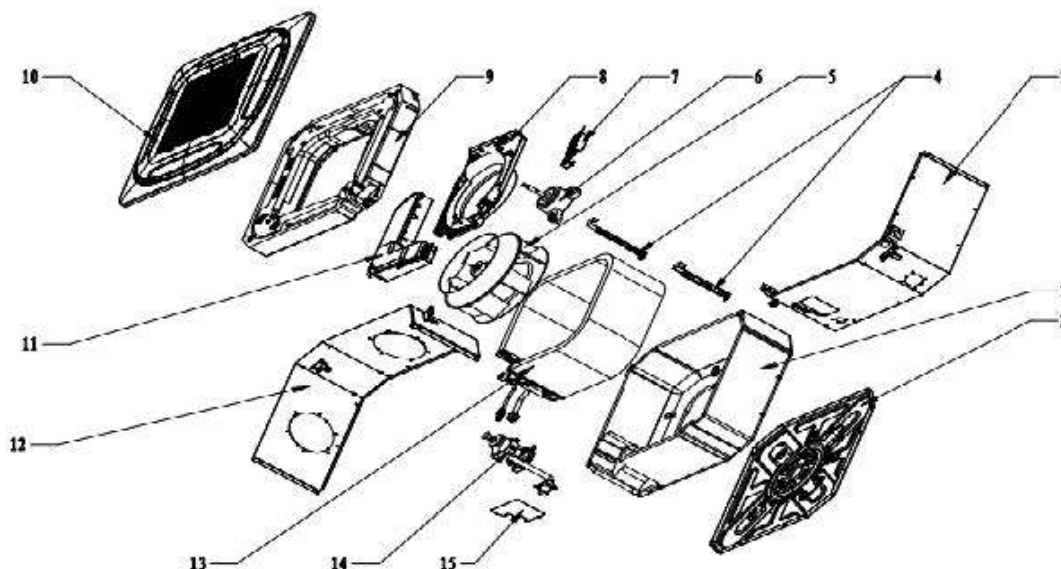
IMPORTANT NOTICE:

Please read this manual carefully before installing or operating your new air conditioning system. Be sure to save this manual for future reference.



CYT009GLSI24RL

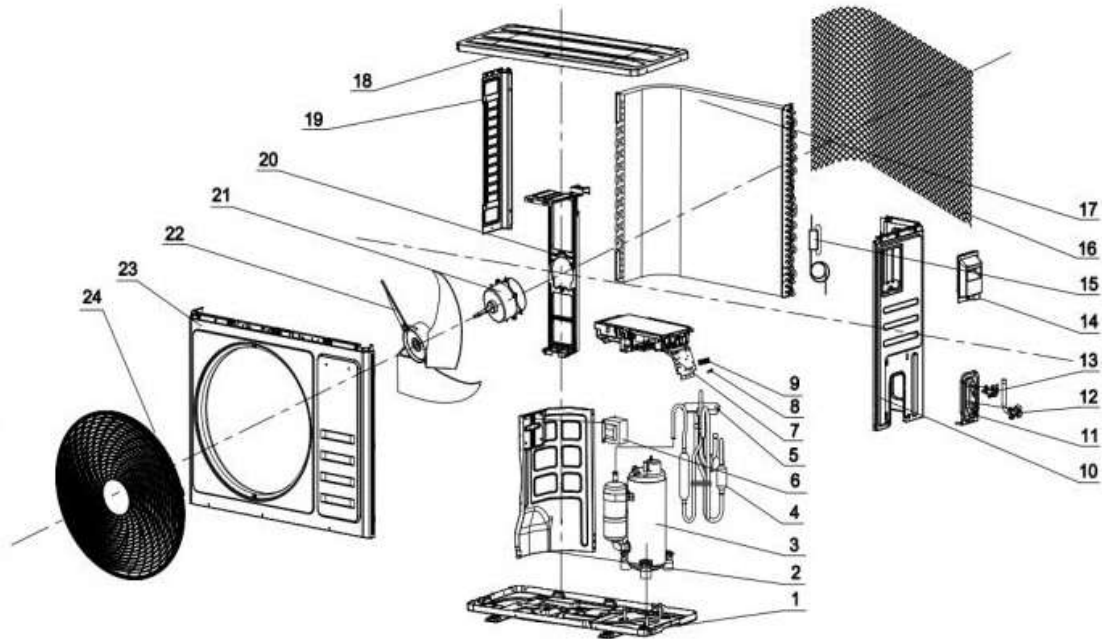
Indoor Unit: CT009GLSILCFHG



No.	Part No.	Part Name	Q'ty	Remark
1	45004-000651	Base	1	
2	45004-000653	Base foam	1	
3	45901-000150	Dash panel	1	
4	H0218-110089	Fixed plate	1	
5	42004-000296	Centrifugal fan	1	
6	25001-000441	Motor	1	
7	/	Wi-Fi module	1	
8	45008-000455	Wind deflector	1	
9	45011-000218	Water pans	1	
10	/	Pane 1	1	
11	45006-001767	Electronic box cover	1	
12	45901-000139	Back surround plate	1	
13	K0304-110284	Evaporator	1	
14	M0401-110007	Water pump component	1	
15	45901-000140	Outlet tube sealing plate assembly	1	
16	35004-001914	Main PCB	1	Not shown in the Explosion view
17	95004-000456	Drain-pipe	1	
18	25004-000310	Sensor	1	
19	/	Remote control	1	

CYT009GLSI24RL

Outdoor Unit: YN009GLSI24RPG



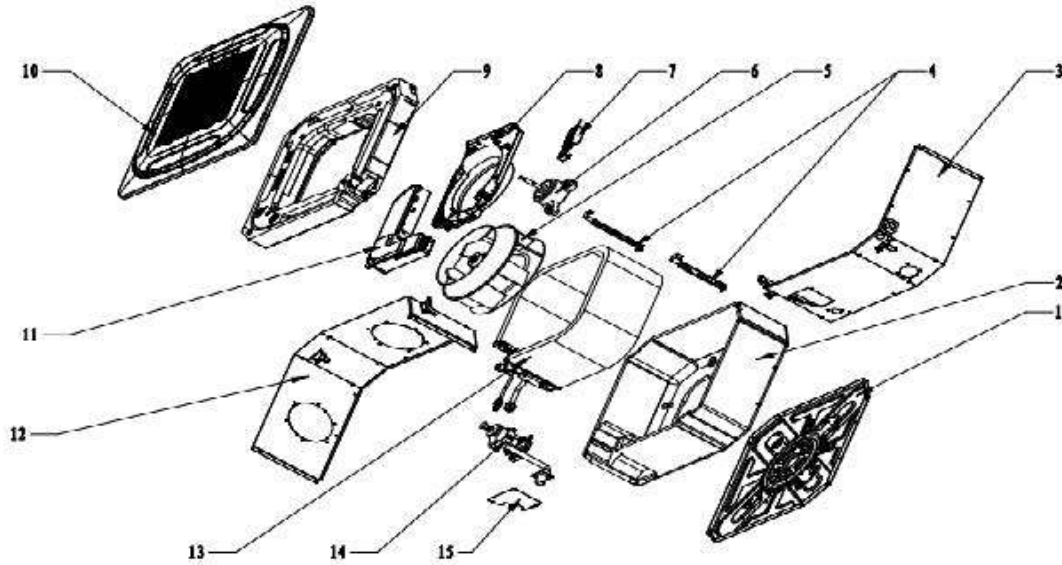
No.	Part No.	Part Name	Q'ty	Remark
1	41202-000641	Base	1	
2	41208-001212	Partition plate	1	
3	92014-001128	Compressor	1	
4	92007-021791	4-way valve assembly	1	
5	92008-000471	4-way valve	1	
6	/	Reactor	/	
7	31201-003237	Outdoor control assembly	1	
8	42001-000036	Clamp	1	
9	11304-100116	Terminal	1	
10	41205-000655	Right plate	1	
11	41204-000018	Valve supporter	1	
12	92007-001041	3-way valve	1	
13	92007-007317	2-way valve	1	
14	41201-000106	Electrical box cover	1	
15	92007-021641	Capillary assembly	1	
16	42011-000185	Back grille	1	
17	92011-008350	Condenser	1	
18	41207-000040	Top cover	1	
19	41205-000131	Support	1	
20	41203-000047	Outdoor motor supporter	1	
21	22001-000555	Outdoor Motor	1	
22	42004-000106	Propeller fan	1	
23	41206-000059	Front plate	1	
24	42011-000041	Fan guard	1	
25	A2005-000536	Base carton	1	Not shown in Explosion view

Outdoor Unit: YN009GLSI24RPG (Continued)

26	A1202-000041	Base foam	1	Not shown in the Explosion view
27	41213-000032	Cover foam	1	
28	92009-000180	Connecting pipe assembly 1	1	
	92009-000187	Connecting pipe assembly 2	1	

CYT012GLSI24RL

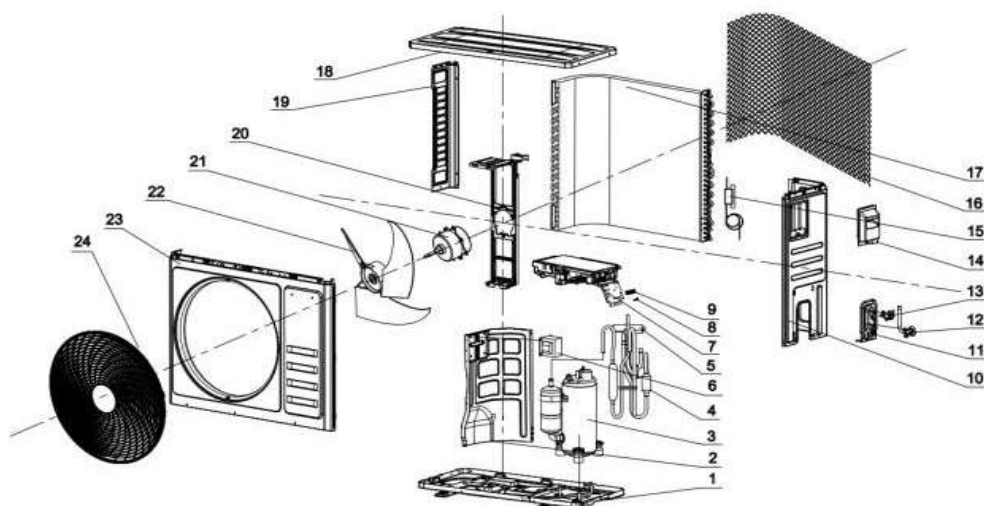
Indoor Unit: CT012GLSILCFHG



No.	Part No.	Part Name	Q'ty	Remark
1	45004-000651	Base	1	
2	45004-000653	Base foam	1	
3	45901-000150	Dash panel	1	
4	H0218-110089	Fixed plate	1	
5	42004-000296	Centrifugal fan	1	
6	25001-000441	Motor	1	
7	/	Wi-Fi module	1	
8	45008-000455	Wind deflector	1	
9	45011-000218	Water pans	1	
10	/	Pane	1	
11	45006-001767	Electronic box cover	1	
12	45901-000139	Back surround plate	1	
13	K0304-110284	Evaporator	1	
14	M0401-110007	Water pump component	1	
15	45901-000140	Outlet tube sealing plate assembly	1	
16	35004-001914	Main PCB	1	Not shown in the Explosion view
17	95004-000456	Drain-pipe	1	
18	25004-000310	Sensor	1	
19	/	Remote control	1	

CYT012GLSI24RL

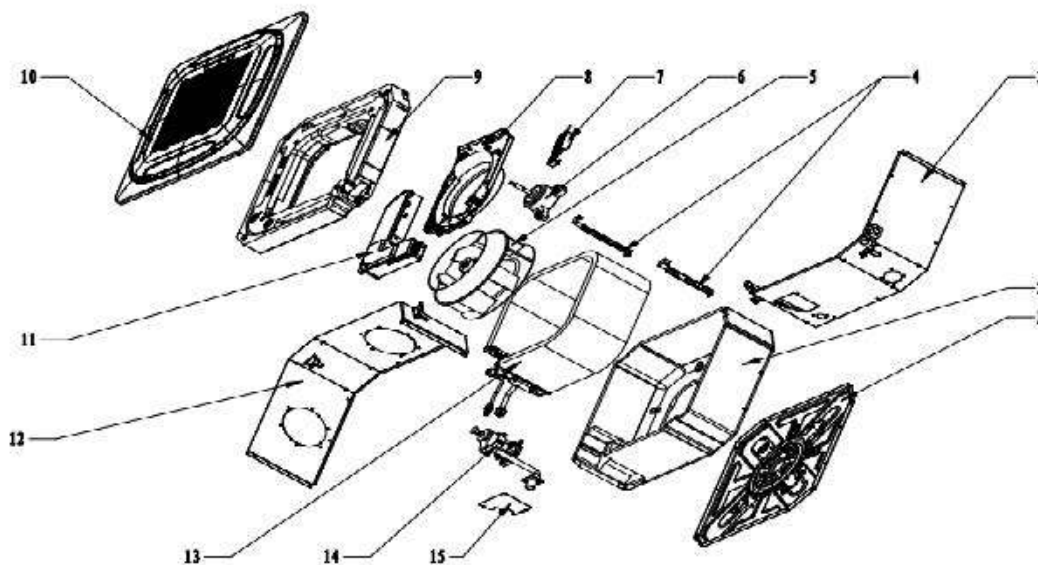
Outdoor Unit: YN012GLSI24RPG



No.	Part No.	Part Name	Q'ty	Remark
1	41202-000641	Base	1	
2	41208-001212	Partition plate	1	
3	92014-000760	Compressor	1	
4	92007-022014	4-way valve assembly	1	
5	92008-000511	4-way valve	1	
6	/	Reactor	/	
7	31201-003337	Outdoor control assembly	1	
8	42001-000036	Clamp	1	
9	11304-100117	Terminal	1	
10	41205-000086	Right plate	1	
11	41204-000018	Valve supporter	1	
12	92007-001041	3-way valve	1	
13	92007-007317	2-way valve	1	
14	41201-000106	Electrical box cover	1	
15	92007-020662	Capillary assembly	1	
16	42011-000185	Back grille	1	
17	92011-000868	Condenser	1	
18	41207-000040	Top cover	1	
19	41205-000131	Support	1	
20	41203-000047	Outdoor motor supporter	1	
21	22001-000555	Outdoor motor	1	
22	42004-000106	Propeller fan	1	
23	41206-000059	Front plate	1	
24	42011-000041	Fan guard	1	
25	A2005-000536	Base carton	1	Not shown in the Explosion view
26	A1202-000041	Base foam	1	
27	41213-000032	Cover foam	1	
28	92009-000180	Connecting pipe assembly 1	1	
	92009-000187	Connecting pipe assembly 2	1	

CYT018GLSI24RL

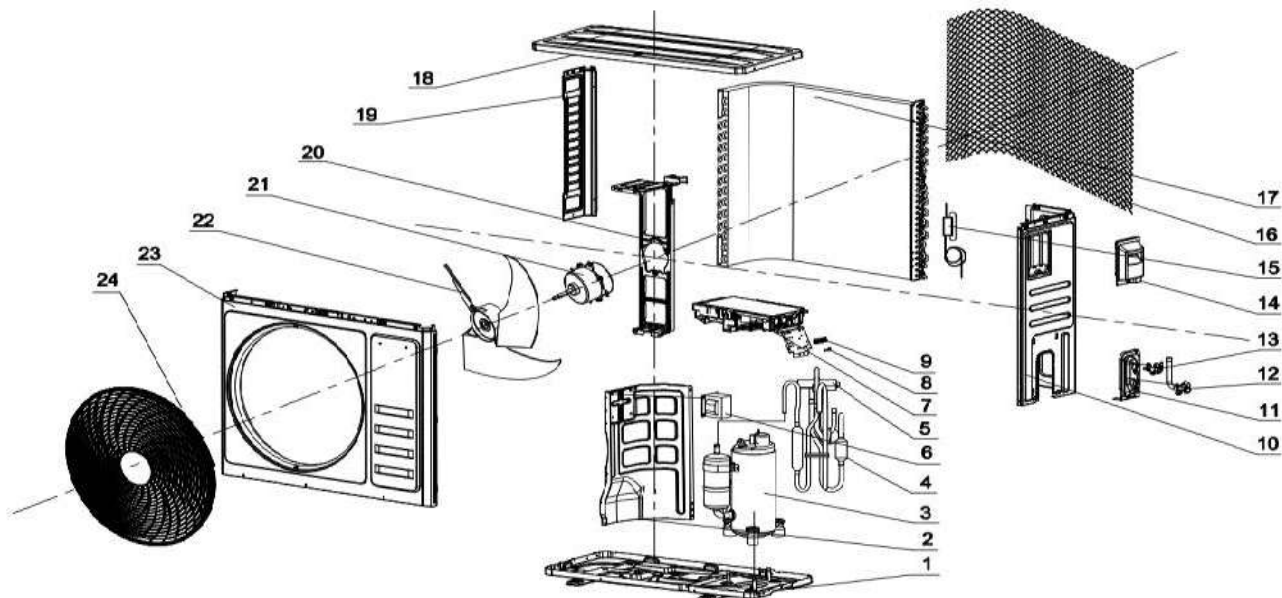
Indoor Unit: CT018GLSILCFHG



No.	Part No.	Part Name	Q'ty	Remark
1	45004-000651	Base	1	
2	45004-000653	Base foam	1	
3	45901-000150	Dash panel	1	
4	H0218-110089	Fixed plate	1	
5	42004-000296	Centrifugal fan	1	
6	25001-000441	Motor	1	
7	/	Wi-Fi module	1	
8	45008-000455	Wind deflector	1	
9	45011-000218	Water pans	1	
10	/	Pane	1	
11	45006-001767	Electronic box cover	1	
12	45901-000139	Back surround plate	1	
13	95003-006031	Evaporator	1	
14	M0401-110007	Water pump component	1	
15	45901-000140	Outlet tube sealing plate assembly	1	
16	35004-001914	Main PCB	1	
17	95004-000456	Drain-pipe	1	Not shown in the Explosion view
18	25004-000310	Sensor	1	
19	/	Remote control	1	

CYT018GLSI24RL

Outdoor Unit: YN018GLSI24RPG



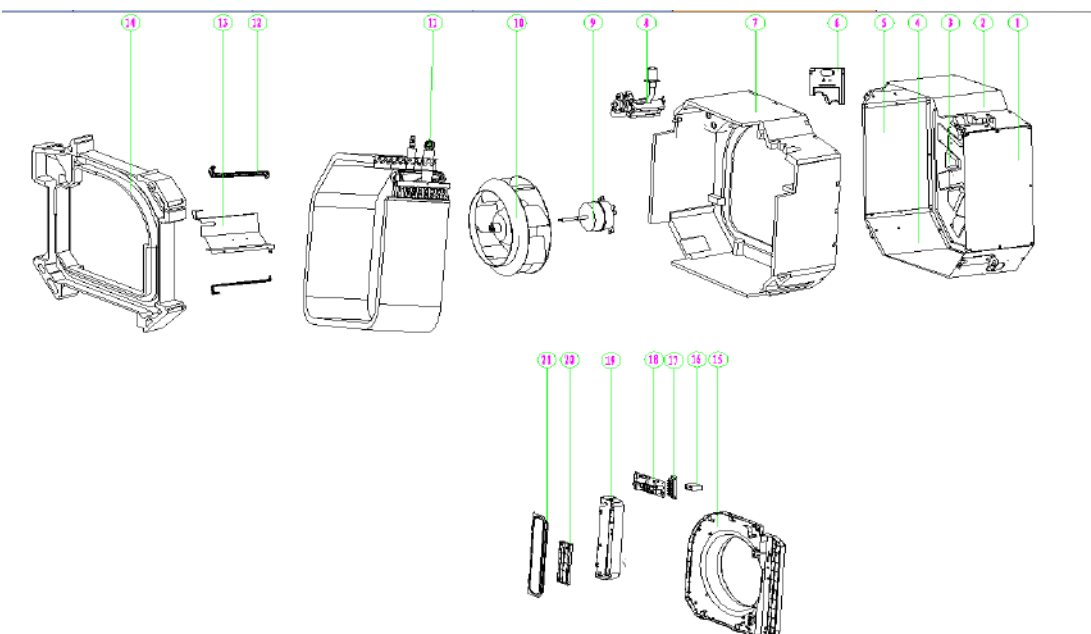
No.	Part No.	Part Name	Q'ty	Remark
1	41202-000371	Base	1	
2	41208-000904	Partition plate	1	
3	92014-000318	Compressor	1	
4	92007-021418	4-way valve assembly	1	
5	92008-000495	4-way valve	1	
6	/	Reactor	/	
7	31201-003301	Outdoor control assembly	1	
8	42001-000036	Clamp	1	
9	11304-100117	Terminal	1	
10	41205-000092	Right plate	1	
11	41204-000018	Valve supporter	1	
12	92007-001042	3-way valve	1	
13	92007-006491	2-way valve	1	
14	41201-000106	Electrical box cover	1	
15	92007-020691	Capillary assembly	1	
16	42011-000187	Back grille	1	
17	92011-006053	Condenser	1	
18	41207-000028	Top cover	1	
19	41205-000135	Support	1	
20	41203-000032	Outdoor motor supporter	1	
21	22001-000147	Outdoor motor	1	
22	42004-000105	Propeller fan	1	
23	41206-000058	Front plate	1	
24	42011-000039	Fan guard	1	
25	A2005-000521	Base carton	1	Not shown in Explosion view

Outdoor Unit: YN018GLSI24RPG (Continued)

26	A1202-000030	Base foam	1	Not shown in the Explosion view
27	41110-000204	Cover foam	1	
28	10104-100145	Sensor	1	
29	92009-000171	Connecting pipe assembly 1	1	
	92009-000218	Connecting pipe assembly 2	1	

CYT024GLSI24RL

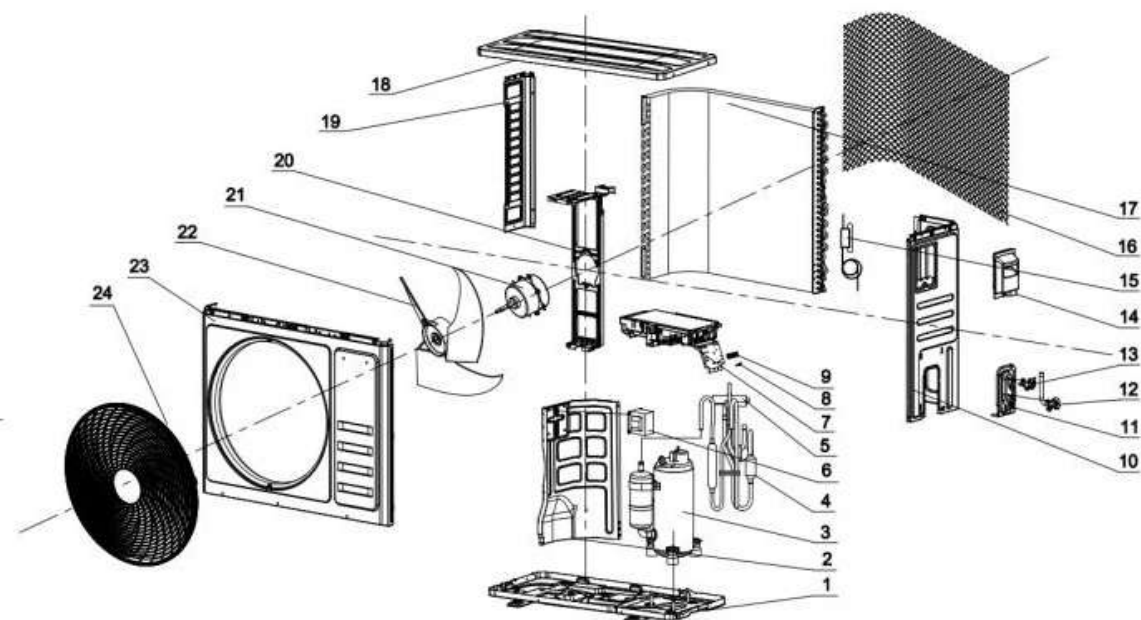
Indoor Unit: CT024GLSILSFHG



No.	Part No.	Name	Q'ty	Remark
1	45901-000103	Left and right surround plate assembly	1	
2	45901-000089	Front coaming assembly	1	
3	45004-000537	Base	1	
4	45901-000091	Back surround plate	1	
5	45901-000103	Left and right surround plate assembly	1	
6	45901-000141	Outlet tube sealing plate assembly	1	
7	45004-000325	Base foam	1	
8	M0401-110001	Water pump component	1	
9	25001-000429	Indoor motor	1	
10	45009-000076	Centrifugal fan	1	
11	95003-001908	Evaporator	1	
12	46301-000171	Evaporator hook	2	
13	95003-002186	Evaporator	1	
14	45011-000120	Water pan assembly	1	
15	45008-000336	Lead flow circle	1	
16	11501-100018	Relay	1	
17	11304-100063	Terminal	1	
18	35004-001882	Main PCB	1	
19	45006-001734	Electrical box	1	
20	/	/	1	
21	35001-000374	Electronic box cover	1	

CYT024GLSI24RL

Outdoor Unit: YN024GLSI24RPG



No.	Part No.	Part Name	Q'ty	Remark
1	41202-000628	Base	1	
2	41208-001049	Partition plate	1	
3	92014-000814	Compressor	1	
4	92007-021874	4-way valve assembly	1	
5	92008-000495	4-way valve	1	
6	/	Reactor	/	
7	31201-003303	Outdoor control assembly	1	
8	42001-000038	Clamp 1	1	
	42001-000036	Clamp 2	1	
9	11304-100117	Terminal	1	
10	41205-000219	Right plate	1	
11	41204-000018	Valve supporter	1	
12	92007-005289	3-way valve	1	
13	92007-007583	2-way valve	1	
14	41201-000106	Electrical box cover	1	
15	92007-020737	Capillary assembly	1	
16	42011-000419	Back grille	1	
17	92011-008072	Condenser	1	
18	41207-000048	Top cover	1	
19	41205-000217	Support	1	
20	41203-000115	Outdoor motor supporter	1	
21	22001-000147	Outdoor motor	1	
22	42004-000249	Propeller fan	1	
23	41206-000076	Front plate	1	
24	42011-000031	Fan guard	1	
25	A1201-012669	Base carton	1	Not shown in Explosion view

Outdoor Unit: YN024GLSI24RPG (Continued)

26	A1202-000086	Base foam	1	Not shown in the Explosion view
27	A1202-000085	Cover foam	1	
28	10104-100145	Sensor	1	
29	92009-000171	Connecting pipe assembly 1	1	
	92009-000628	Connecting pipe assembly 2	1	

The design and specifications of this product are subject to change without prior notice as development continues. Consult with the sales agency or manufacturer for details. Refer to the equipment nameplate for all other applicable specifications.

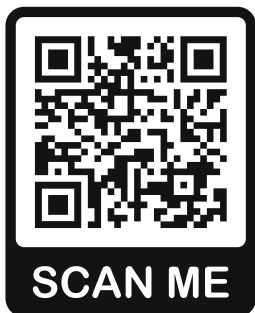


is a registered trademark of Parker Davis HVAC International, LLC.

Parker Davis HVAC International
7290 NW 77 Court, Miami, FL 33166 - USA
Tel : (305) 513-4488
Fax : (305) 513-4499
E-mail : info@pdhvac.com
Website: www.pdhvac.com

Pioneer product line, parts, and supplies are available online for convenient ordering at:
www.highseer.com
www.pioneerminisplit.com

Scan the below code to visit our support page where you can find more installation materials:



Copyright © Parker Davis HVAC International, LLC. All rights reserved.
