

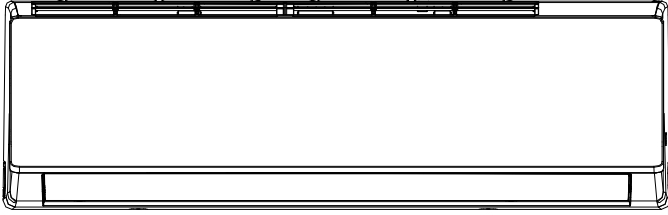
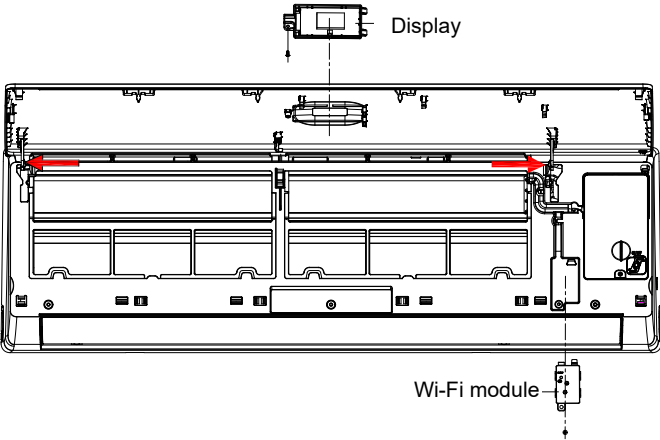
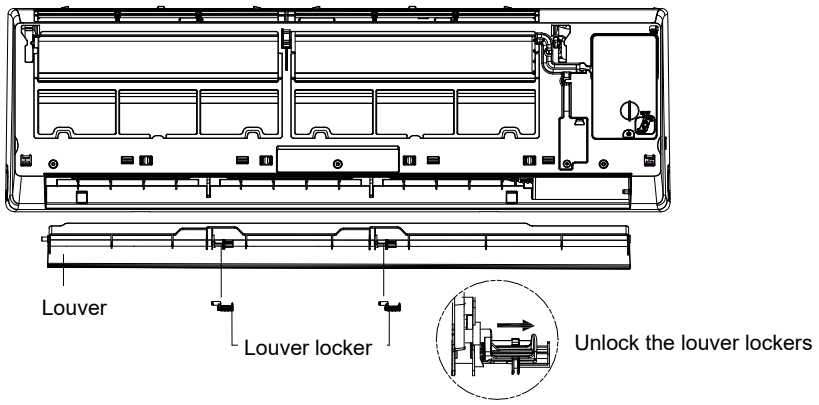
Inverter Air Conditioner **Indoor/Outdoor Units** **Disassembly Manual**

Models:

WYT012ALUI17RL WYT012GLUI17RL
WYT018GLUI17RL WYT024GLUI17RL
WYT036GLUI17RL

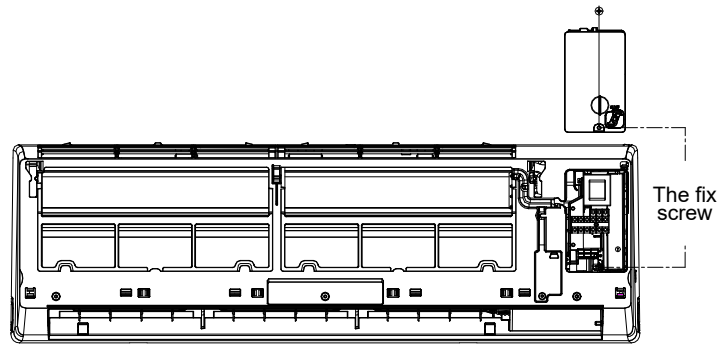
IDU Disassembly

Indoor Unit Model Numbers: WT012ALUI17HLD | WT012GLUI17HLD | WT018GLUI17HLD | WT024GLUI17HLD | WT036GLUI17HLD

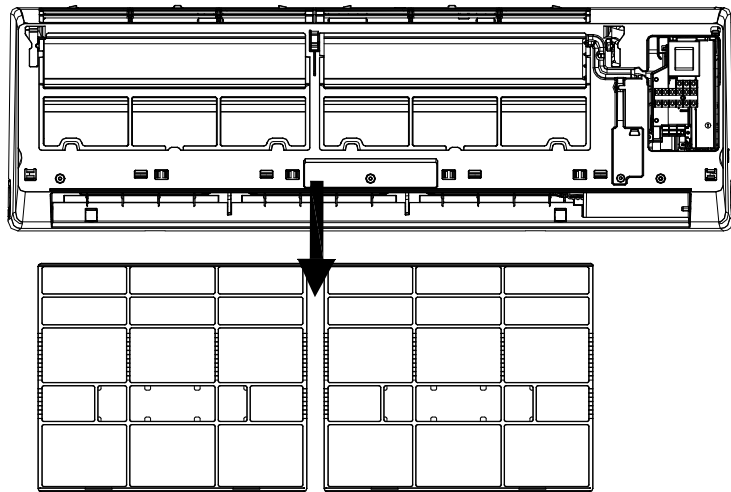
Steps	Reference Photo
<p>Before disassembly</p>	
<p>1. Disassemble front panel, display board, and Wi-Fi module</p> <p>A. Open front panel.</p> <p>B. Remove 1 screw, then take the display box out from the panel.</p> <p>C. Release the panel axis, which is shown in red arrows, out from middle frame and take the panel out.</p> <p>D. Unscrew and remove the Wi-Fi module from the middle frame.</p>	
<p>2. Remove the louver</p> <p>Unlock the louver lockers (clip). Bend the louver slightly by hand and remove it from the middle frame and stepping motor.</p>	

3. Remove the electric control box cover

Unfix 1 screw on the electric box cover, then remove the cover.

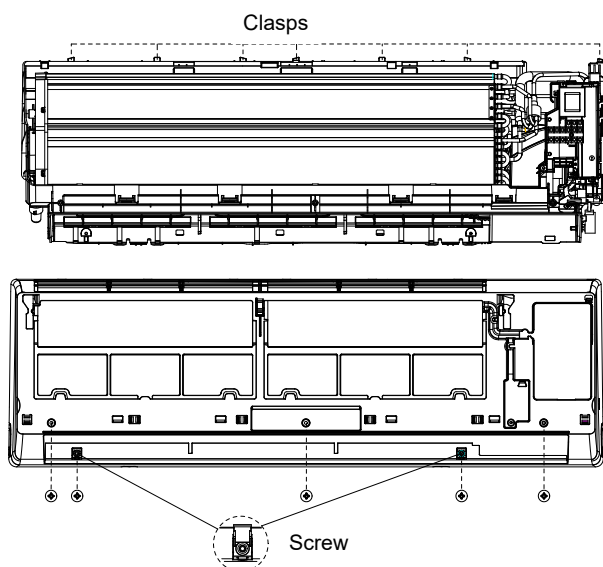
**4. Remove the filter**

Push the filter upwards a little. You can take it out from the unit.

**5. Disassemble the middle frame**

A. Open the screw cover and unfix the screw with a cross screwdriver.

B. Remove the middle frame by loosening the clasps of the unit base, as shown in the picture. Take the frame out.



6. Disassemble the electric control box

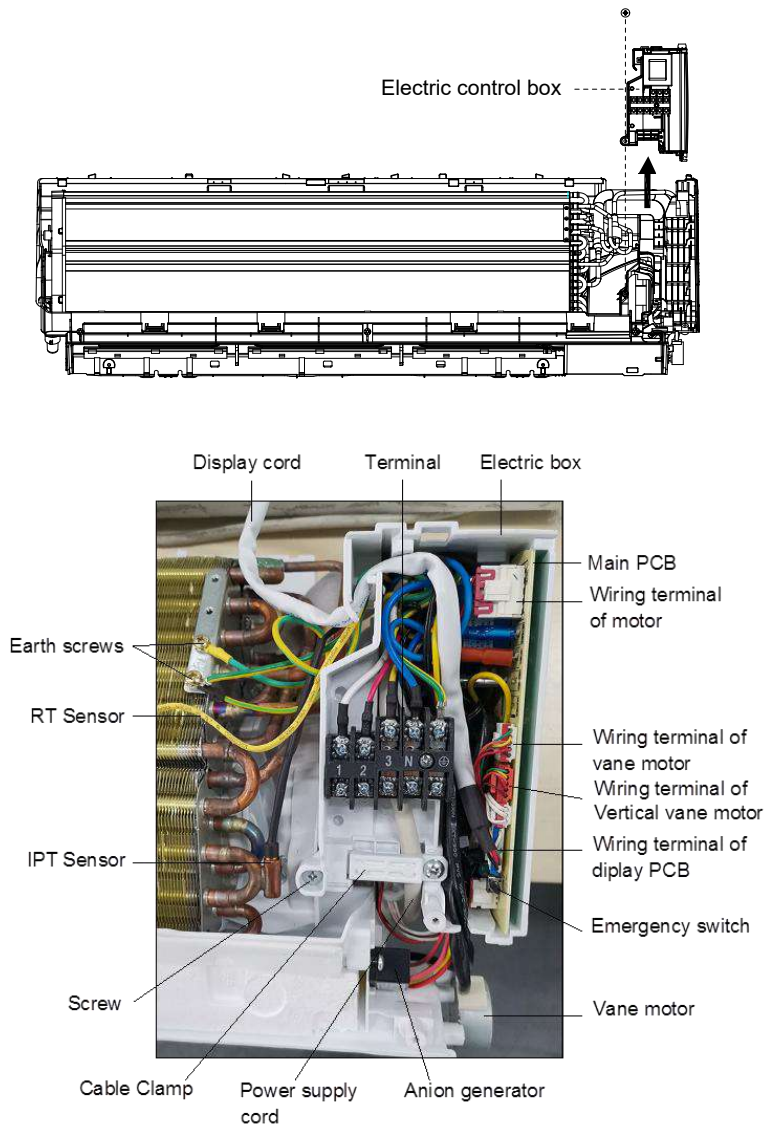
A. Remove the RT and IPT from the evaporator.

B. Unscrew all the earth ground wirings on the evaporator.

C. Take all the connectors out from the PCB.

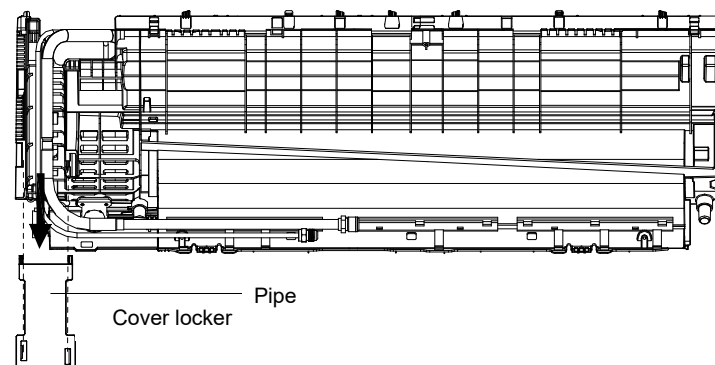
D. Unfix 1 screw from the control box of the unit base frame. Remove the control box out from the unit.

Note: The picture on the right is for your reference only. The wiring connection for the exact model may be slightly different.



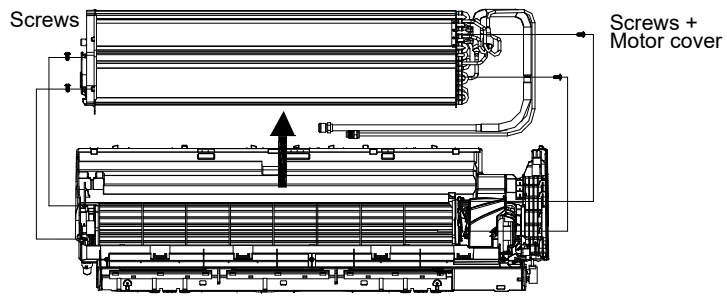
7. Remove the pipe cover

Loosen the lower edge of the pipe cover from the base frame, then remove the cover from the unit.

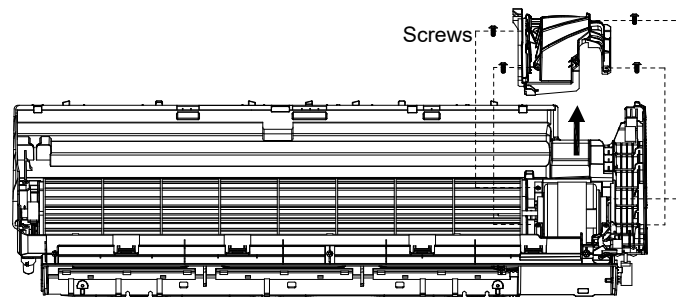


8. Disassemble the evaporator

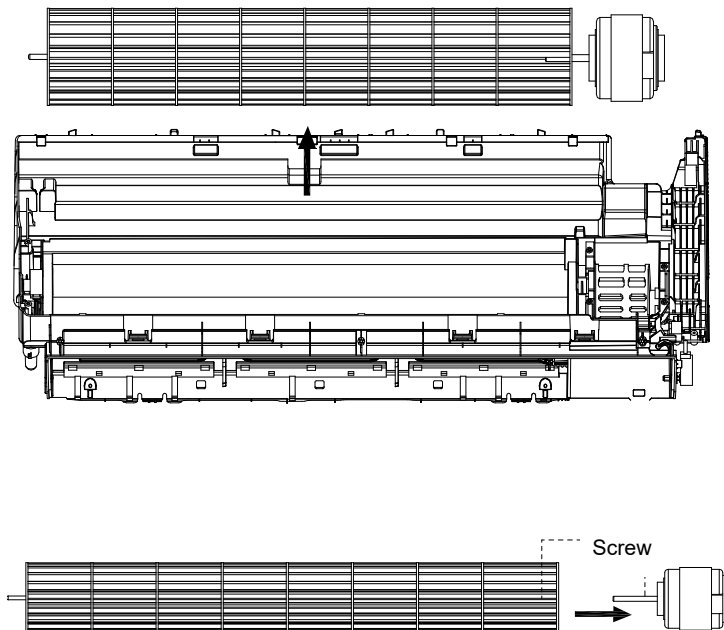
- A.** Unfix 2 screws on the left side, as shown as in the picture.
- B.** Unfix 2 screws on the right side of the motor cover/right support plate.
- C.** Take the evaporator out from the unit by uplifting the input/output pipes slightly.

**9. Remove the motor cover**

Unfix 4 screws on the motor cover of the base frame.

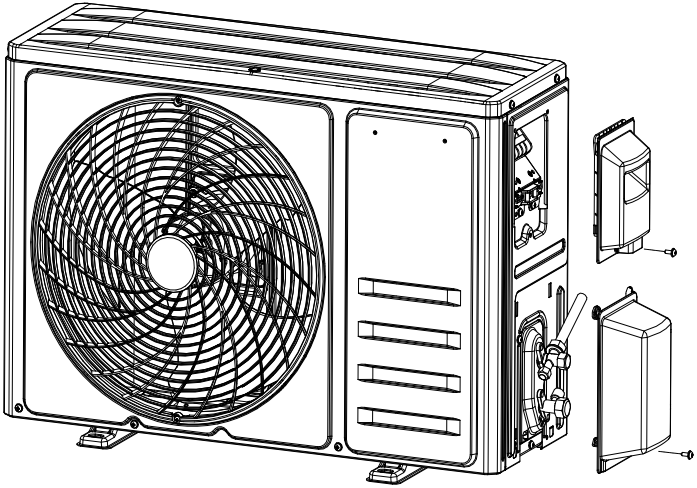
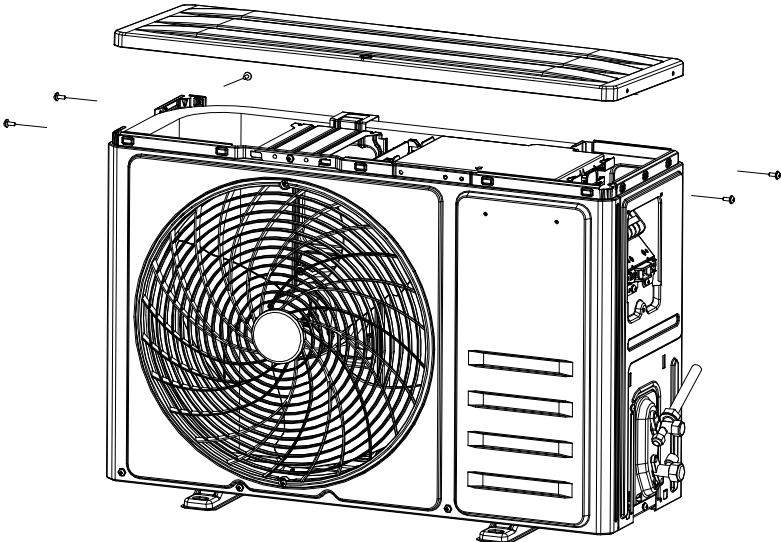
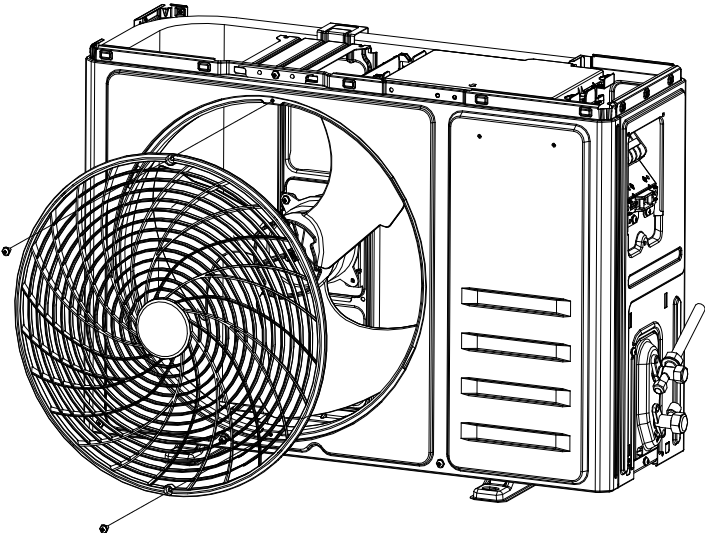
**10. Disassemble fan motor and fan blade**

- A.** Lift the fan blade and fan motor. Take the base frame out.
- B.** Unfix 1 screw on the axis of fan motor, then you can separate the fan blade and fan motor.



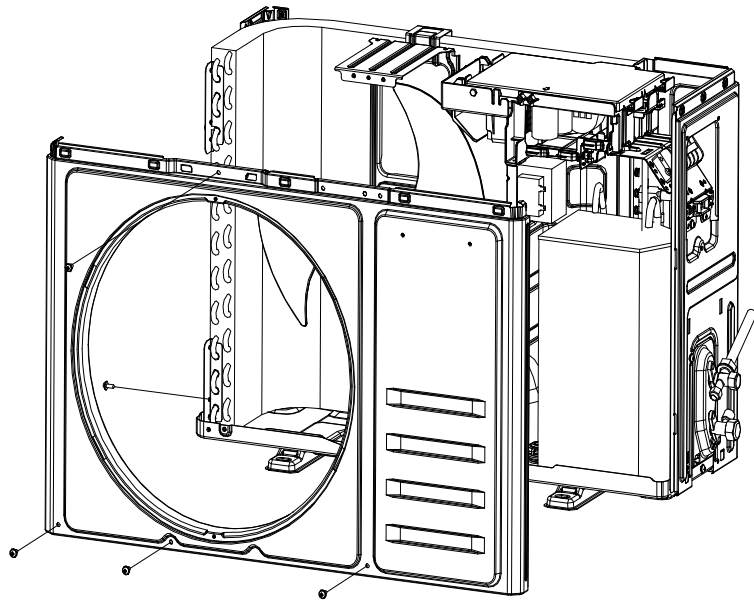
ODU Disassembly

Outdoor Unit Model Numbers: YN012ALUI17RPD | YN012GLUI17RPD | YN018GLUI17RPD | YN024GLUI17RPD | YN036GLUI17RPD

Step	Reference Photo
1. Remove the PCB cover, valve cover, and top cover	
<p>A</p> <p>1) Unfix 1 screw on the PCB cover, then you can remove the cover from the unit.</p> <p>2) Unfix 1 screw on the valve cover, and then you can take it out.</p>	
<p>B</p> <p>Unfix the screws on the top/left/right plates, and then you can take the top cover out.</p>	
2. Disassemble the fan guard and front panel	
<p>A</p> <p>Unfix the screws on the front panel of the fan guard.</p>	

B

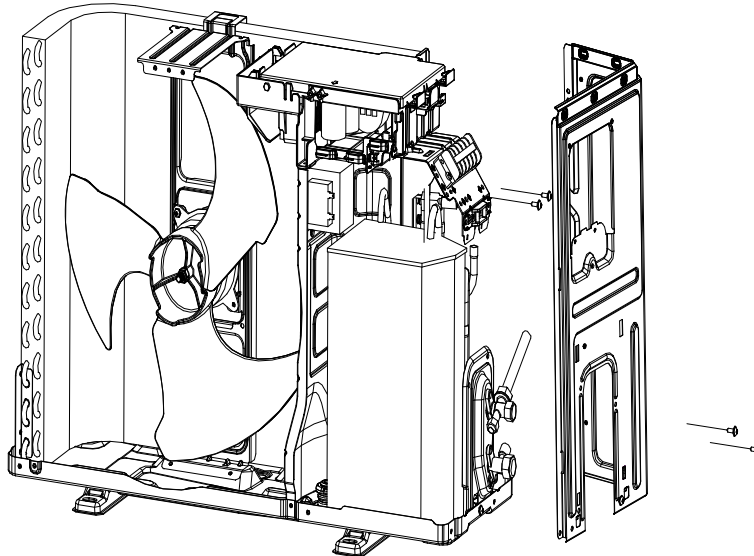
Separate the ODU middle plate and base plate. Lift the front panel so you can take it out from the unit.



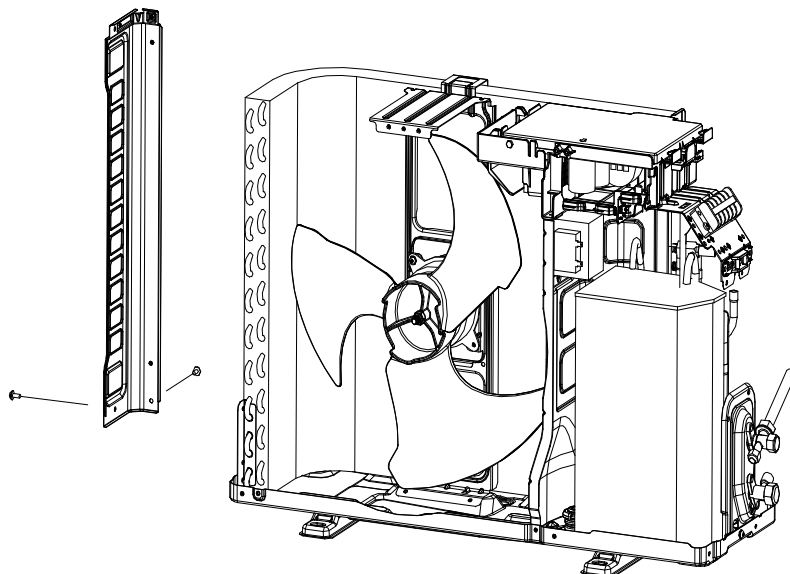
3. Disassemble the left and right plate

A

Unfix screws on the right plate, electric box assembly, valve plate, and base plate. You can then take the right plate out.

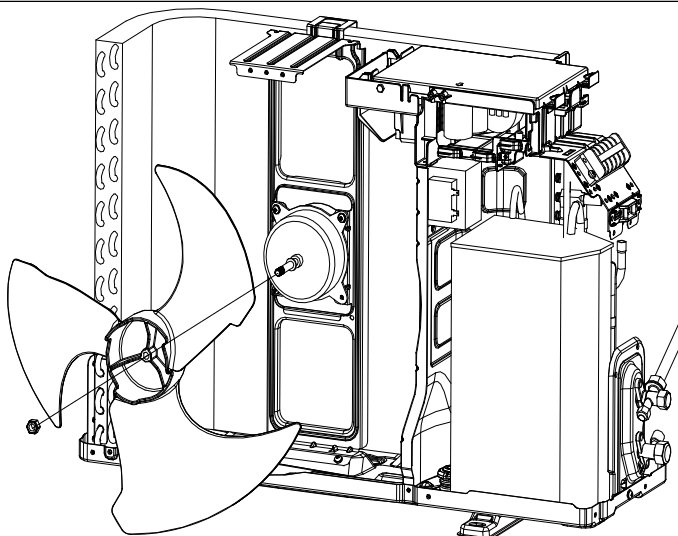
**B**

Unfix the screws on the left plate, base plate, and condenser plate. You can then take the left plate out.

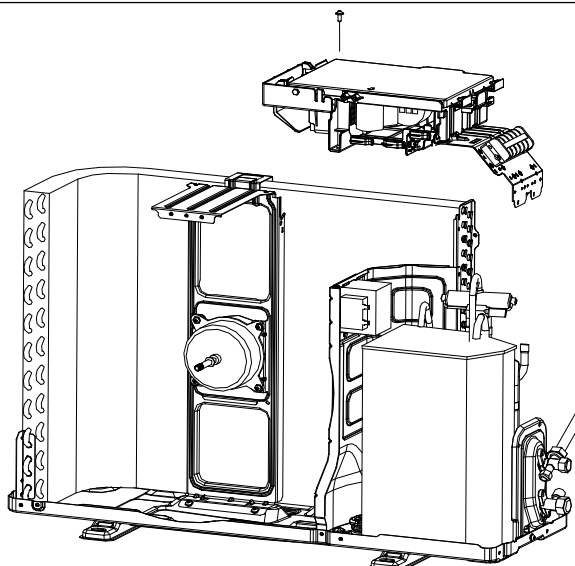


4. Disassemble the axis fan blade

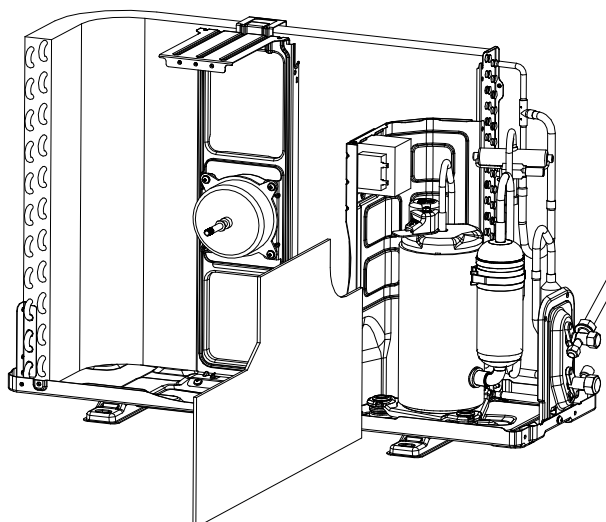
- A** Unscrew the fan blade nut. Remove the blade.

**5. Disassemble the electric box**

- A** Unfix the screws on the electric box and motor supporter, etc. Loosen the wiring clamp, then you can take the control box out.

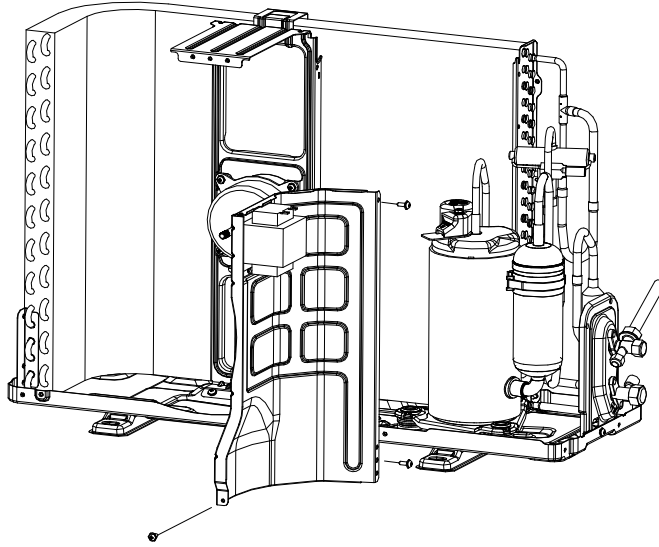
**6. Remove the noise cotton**

- A** Take the cotton out, as shown in the picture.



7. Disassemble the separate plate**A**

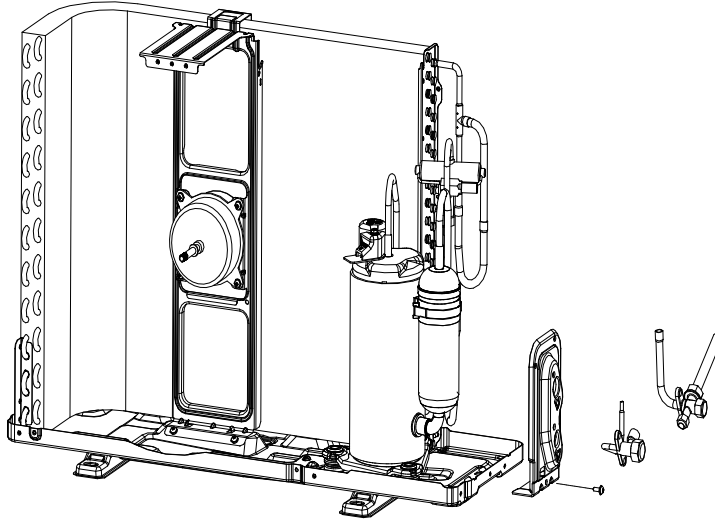
Unfix the screw on the separate plate and unit, then take it out.

**8. Disassemble the 2-way and 3-way valve****A**

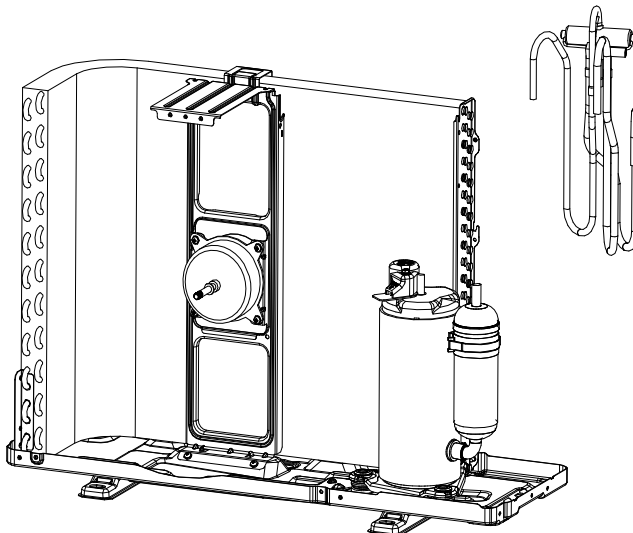
Unfix the screws on the valve plate and base. You can take the 2-way and 3-way valve out by welding.

Note:

- 1). Welding can only occur while there is no gas in the unit.
- 2). Pay attention to the fire to prevent any injury.

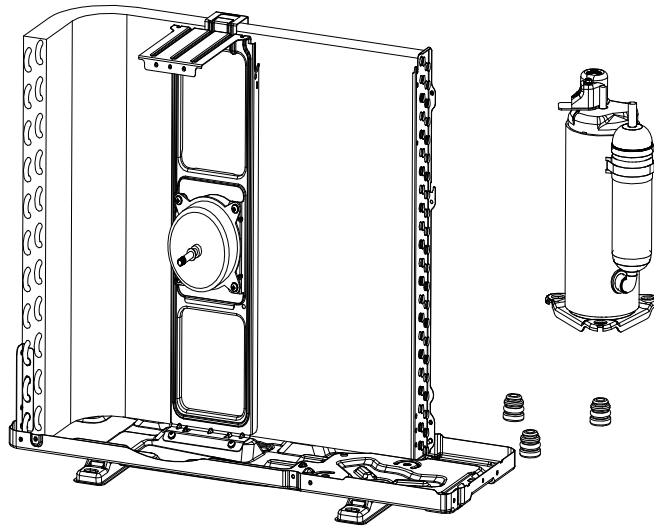
**9. Disassemble the 4-way valve assembly****A**

Remove the 4-way valve from the system by welding. Ensure there is no damage to the compressor, nameplate, etc.



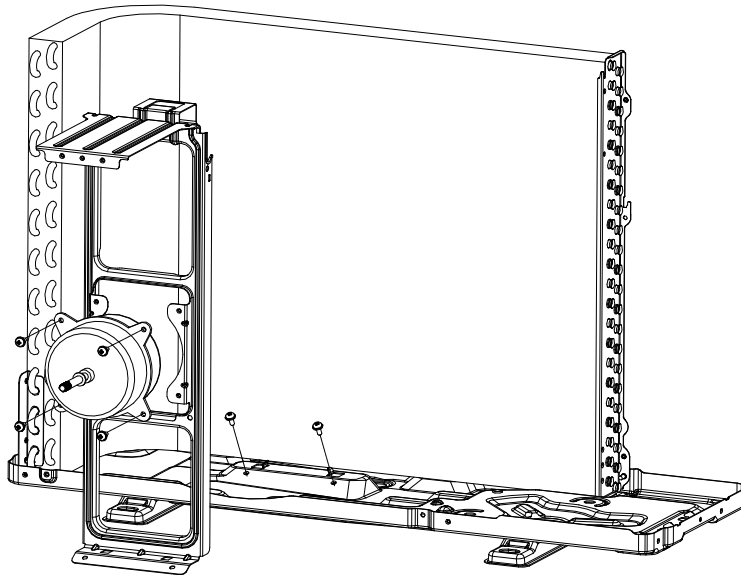
10. Disassemble the compressor

A Unscrew the nuts and remove the compressor.

**11. Remove the fan motor and fan supporter**

A Unfix the screws on the fan motor and supporter, then remove the supporter of the base plate.

Note: Pay attention to the motor wiring. It can't be taken out by force.



The design and specifications of this product are subject to change without prior notice as development continues. Consult with the sales agency or manufacturer for details. Refer to the equipment nameplate for all other applicable specifications.

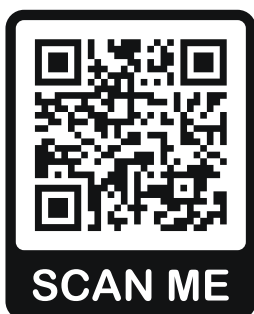


is a registered trademark of Parker Davis HVAC International, LLC.

Parker Davis HVAC International
7290 NW 77 Court, Miami, FL 33166 - USA
Tel : (305) 513-4488
Fax : (305) 513-4499
E-mail : info@pdhvac.com
Website: www.pdhvac.com

Pioneer product line, parts, and supplies are
available online for convenient ordering at:
www.highseer.com
www.pioneerminisplit.com

Scan the below code to visit our support page
where you can find more installation materials:



Copyright © Parker Davis HVAC International, LLC. All rights reserved.
